
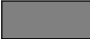



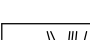
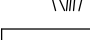
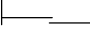
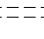



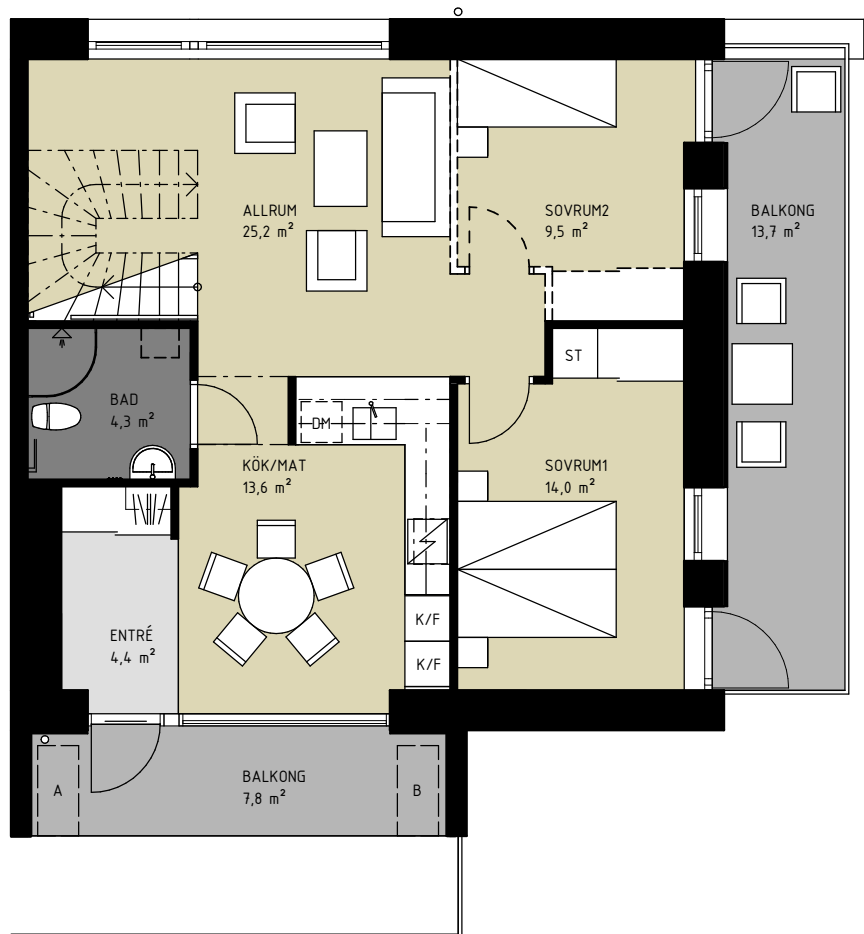
**5 RoK**

**LGH 5104 ETAGE, PLAN 1**

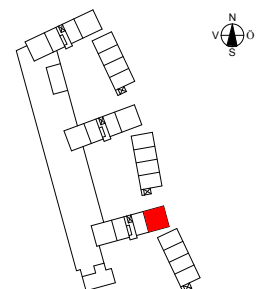
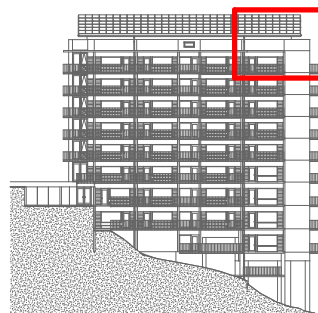
ca 108,5 m<sup>2</sup>

*I husets östra gavel ligger denna etagelägenhet med generösa utomhusytor mot söder och öster, samt utblickar över stora delar av Göteborg. Lägenheten är mycket flexibel, eftersom dess planlösning kan varieras mellan 2-5 Rum och kök. Vardagsrummet är avdelat mot köket, men rummen behåller kontakten genom att köksbänken vetter mot både vardagsrum och kök.*

-  PARKETT
-  KLINKER
-  TEXTIL
-  BALKONG OCH DEL AV BALKONG SOM TILLHÖR LÄGENHETEN
-  KAPPHYLLA
-  SKJUTDÖRRS-GARDEROB
-  FRÄNVALSVÄGG
-  TILLVAL
-  TILLVAL HANDDUKSTORK
-  TILLVAL FÖRVARINGSSKÅP








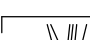
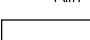
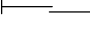


0 1 2 3 4 5m



**5 RoK**

**LGH 5104 ETAGE, PLAN 2**

ca 108,5 m<sup>2</sup>

-  PARKETT
-  KLINKER
-  TEXTIL
-  BALKONG OCH DEL AV BALKONG SOM TILLHÖR LÄGENHETEN
-  KAPPHYLLA
-  SKJUTDÖRRS-GARDEROB
-  FRÄNVALSVÄGG
-  TILLVAL
-  TILLVAL HANDDUKSTORK
-  TILLVAL FÖRVARINGSSKÅP

