





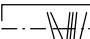

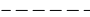
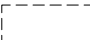


2 RoK

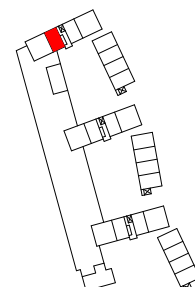
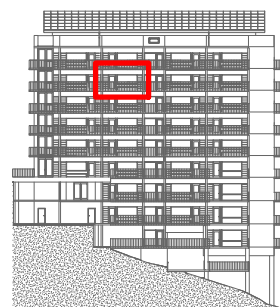
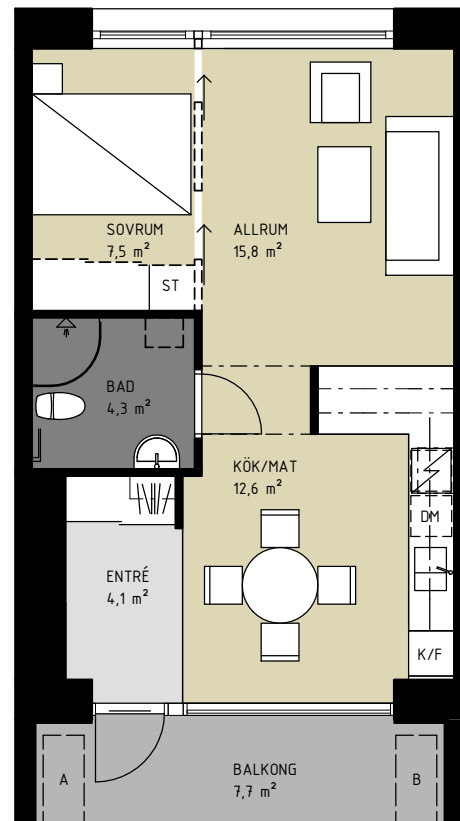
LGH 1092

ca 46,5 m²

Detta är en genomgående, ljus och välplanerad lägenhet med en planlösning som kan varieras från 1-2 Rum och kök. Vardagsrummet är avdelat mot köket, men rummen behåller kontakten genom att köksbänken vetter mot både vardagsrum och kök.





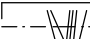
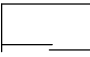
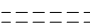
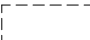


(För alternativ planlösning se bilaga B)

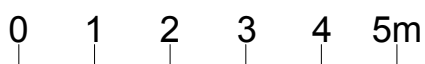
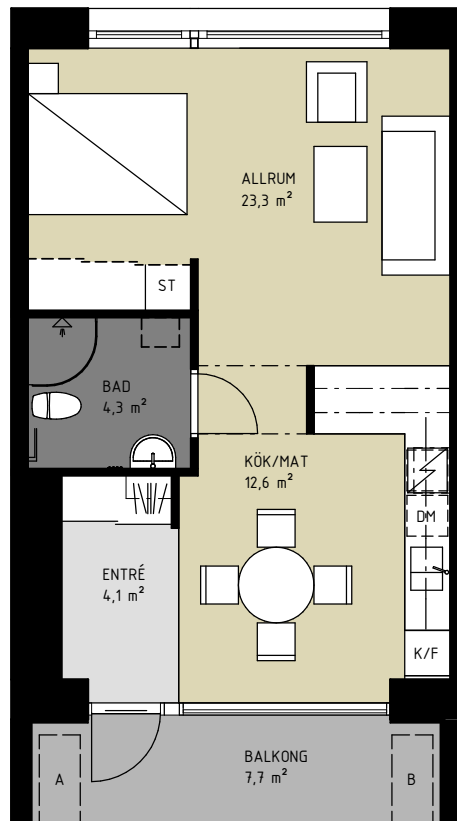
-  PARKETT
-  KLINKER
-  TEXTIL
-  BALKONG OCH DEL AV BALKONG SOM TILLHÖR LÄGENHETEN
-  KAPPHYLLA
-  SKJUTDÖRRS-GARDEROB
-  FRÅNVALSVÄGG
-  TILLVAL
-  TILLVAL HANDDUKSTORK
-  TILLVAL FÖRVARINGSSKÅP







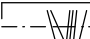

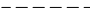



0 1 2 3 4 5m

Bilaga B, 1 RoK

-  PARKETT
-  KLINKER
-  TEXTIL
-  BALKONG OCH DEL AV BALKONG SOM TILLHÖR LÄGENHETEN
-  KAPPHYLLA
-  SKJUTDÖRRS-GARDEROB
-  FRÄNVALSVÄGG
-  TILLVAL
-  TILLVAL HANDDUKSTORK
-  TILLVAL FÖRVARINGSSKÅP



Bilaga B, 2 RoK

-  PARKETT
-  KLINKER
-  TEXTIL
-  BALKONG OCH DEL AV BALKONG SOM TILLHÖR LÄGENHETEN
-  KAPPHYLLA
-  SKJUTDÖRRS-GARDEROB
-  FRÄNVALSVÄGG
-  TILLVAL
-  TILLVAL HANDDUKSTORK
-  TILLVAL FÖRVARINGSSKÅP

