



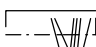



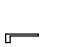
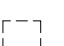
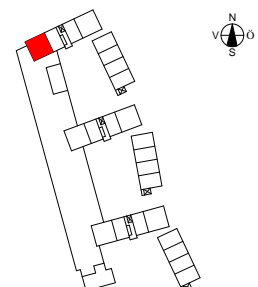
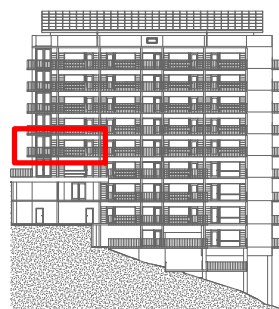
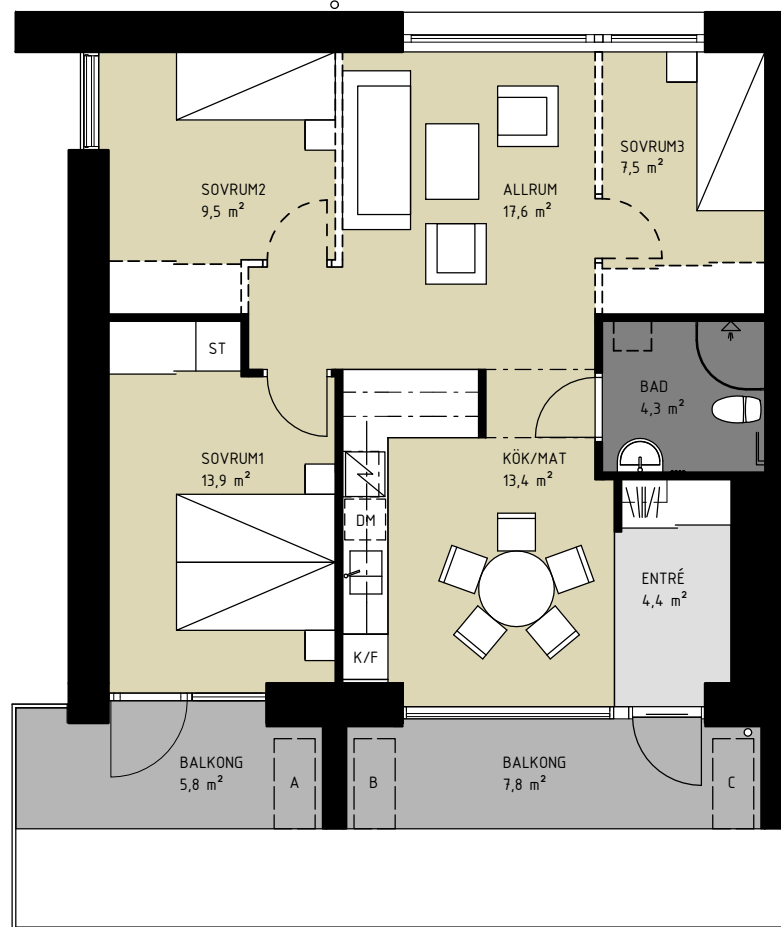


4 RoK
LGH 1061
ca 72,5 m²

I husets västra gavel ligger denna lägenhet med generösa balkongtytor mot söder och väster och goda utblickar mot tre väderstreck. Lägenheten är mycket flexibel, eftersom dess planlösning kan varieras mellan 2-4 Rum och kök. Vardagsrummet är avdelat mot köket, men rummen behåller kontakten genom att köksbänken vetter mot både vardagsrum och kök.





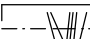
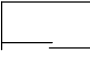
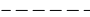
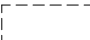
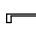

(För alternativ planlösning se bilaga A)

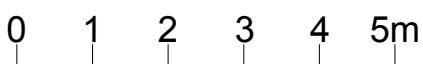
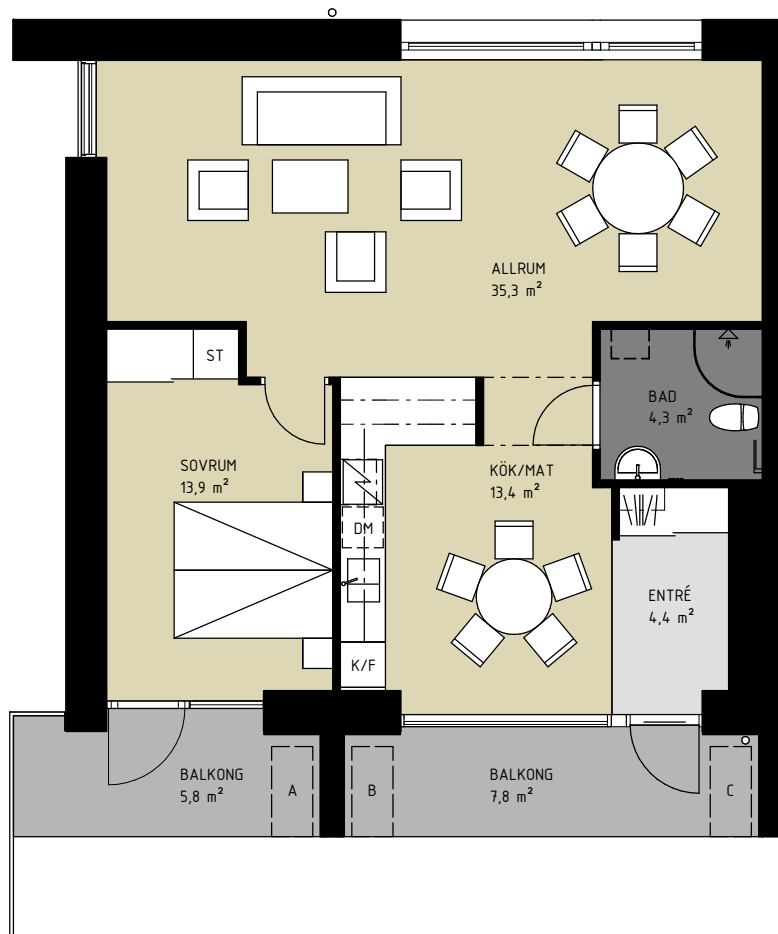
-  PARKETT
-  KLINKER
-  TEXTIL
-  BALKONG OCH DEL AV BALKONG SOM TILLHÖR LÄGENHETEN
-  KAPPHYLLA
-  SKJUTDÖRRS-GARDEROB
-  FRÅNVALSVÄGG
-  TILLVAL
-  TILLVAL HANDDUKSTORK
-  TILLVAL FÖRVARINGSSKÅP







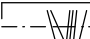

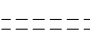
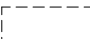

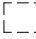
0 1 2 3 4 5m

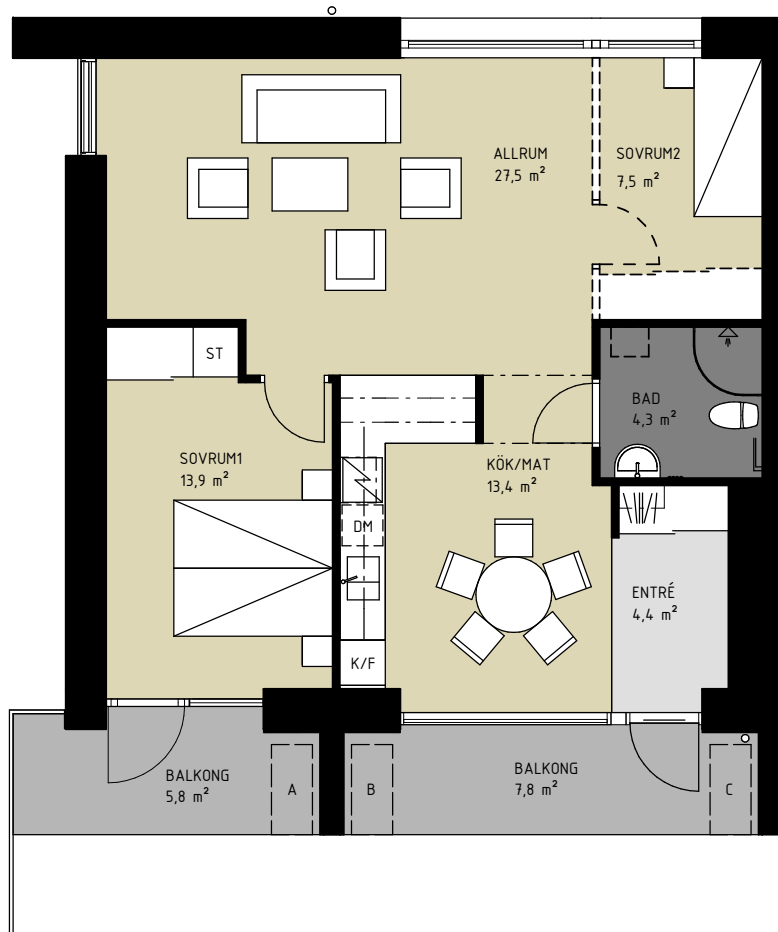
Bilaga A, 2 RoK

-  PARKETT
-  KLINKER
-  TEXTIL
-  BALKONG OCH DEL AV BALKONG SOM TILLHÖR LÄGENHETEN
-  KAPPHYLLA
-  SKJUTDÖRRS-GARDEROB
-  FRÄNVALSVÄGG
-  TILLVAL
-  TILLVAL HANDDUKSTORK
-  TILLVAL FÖRVARINGSSKÅP



Bilaga A, 3 RoK

-  PARKETT
-  KLINKER
-  TEXTIL
-  BALKONG OCH DEL AV BALKONG SOM TILLHÖR LÄGENHETEN
-  KAPPHYLLA
-  SKJUTDÖRRS-GARDEROB
-  FRÄNVALSVÄGG
-  TILLVAL
-  TILLVAL HANDDUKSTORK
-  TILLVAL FÖRVARINGSSKÅP



0 1 2 3 4 5m